

# AWQAF SA

## Discussion: Policy & Impact: **WAQF REVIVAL**

---

*Zeinoul Abedien Cajee*



# Introduction

- **“Waqf is the most powerful sacred, strategic, sustainable, enduring and empowering of all voluntary Islamic charities”**. *Awqaf SA*
- Focus on Policy & Impact
- Revival, 4IR, Education & Social Development
- Perspective of Awqaf SA experience



# Awqaf SA: Context & Model

- Minority Community of between 2&3% of 55 million +- 1.5 million?
- Colonial & Apartheid Era Oppression & Restrictions
- Awqaf SA: Community based / NGO / (Est 2001)
- Receive Waqf donations (Waqf Capital: General/Specific Funds)
- Waqf Funds are pooled and Invested
- Returns (Waqf Revenues) are spent on downstream projects and programmes



# Waqf Revival

## GROWTH LIMITING & INHIBITING FACTORS

- ❖ lack of public awareness
- ❖ lack of financial institution awareness
- ❖ lack of trained professionals in financial services sector
- ❖ lack of enabling environment
- ❖ poor corporate governance
- ❖ lack of indepth knowledge, application, and development potential

## POLICY IMPERATIVES

- Maqasid al Shariah
- Public Advocacy/ Awareness Drive
- Training of Scholars/Ulama/Professionals
- School/University/ Curriculum
- Multigenerational – Long term



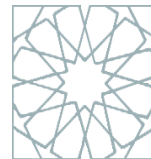
# Waqf Revival

## AWQAF SA INITIATIVES

- Waqf Training Programmes
- Waqf Conference
- [www.Waqfacademy.org](http://www.Waqfacademy.org)
- Online Library
- Waqf Module: Business School
- Brochures/ Magazines/ Newspapers
- Active Website
- Social Media / Videos
- Khutbah
- Stakeholder engagement
- Events

## POLICY IMPERATIVES

- Multipronged Approach
- Critical Success Factors



# Waqf Revival:



**MY WAQF**

**NATIONAL STUDENT WAQF DRIVE**

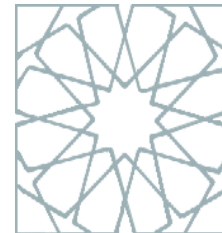


*Spreading the Culture of Waqf Giving*

# Waqf Revival: SA Policy & Impact

- ❖ Enabling Environment
- ❖ Freedom of Association
- ❖ Adequate Legal Framework
- ❖ Tax Incentives
- ❖ Personal Motivational Factors
- ❖ Leaders/Ulama Endorsements
- ❖ Corporate Governance
- ❖ Advocacy, Education & Training
- ❖ Popularisation
- ❖ Corporate Social Investment
- ❖ Community Reinvestment
- ❖ Community “Sovereign” Funds
- ❖ Leadership: Passion & Dedication

- ❖ Liberalisation vs Regulation
- ❖ Civil Society vs State Control



# Waqf: 4IR: Digital World

## Awqaf SA Initiatives

- ❖ Social media
- ❖ Online learning platforms
- ❖ Online Seminars and Symposia
- ❖ Online University Courses
- ❖ Crowd Funding/
- ❖ Online payment

## Policy Imperatives

- Embrace 4IR
- Be ahead of the pack
- Innovate
- Robotics?



# Waqf: Education and Social Development

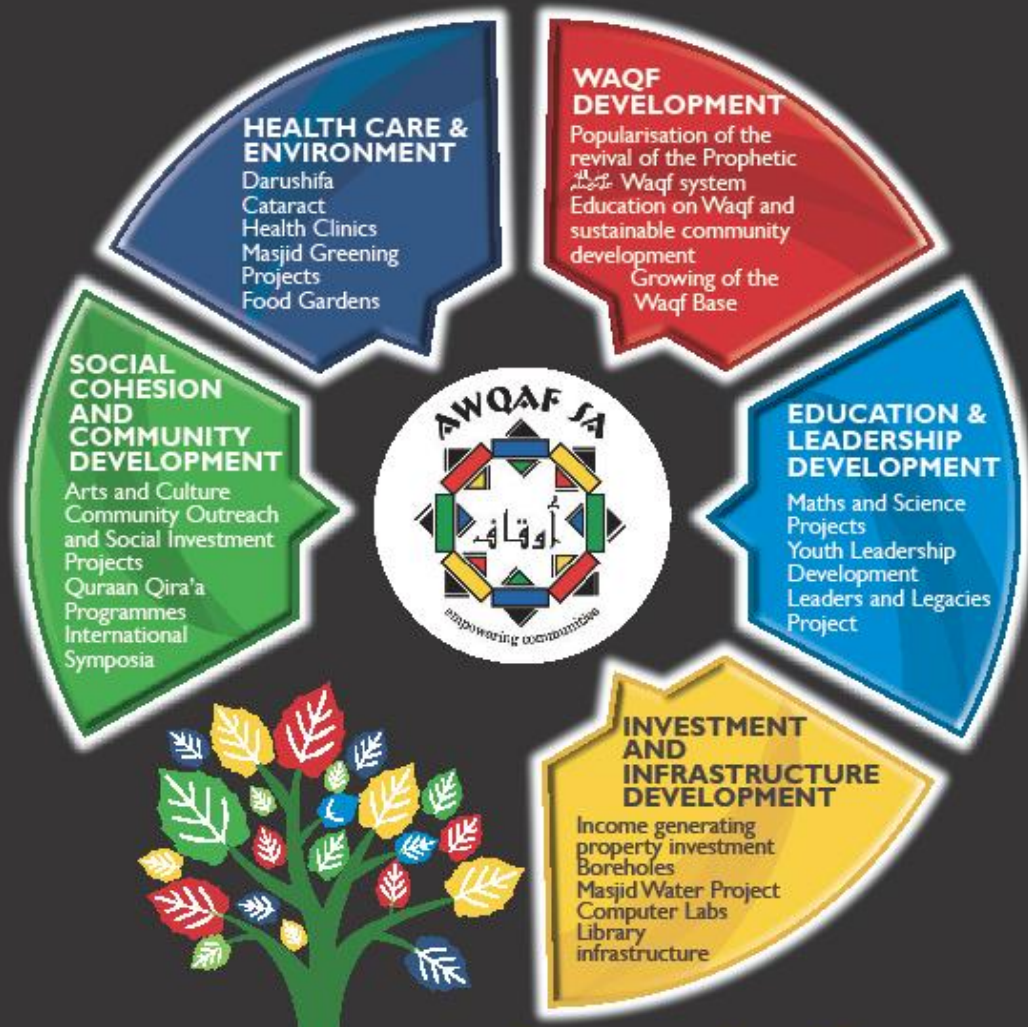
## Awqaf SA Initiatives

- ❖ Education
- ❖ Healthcare & Environment
- ❖ Social Cohesion & Community Development
- ❖ Waqf Development
- ❖ Investment & Infrastructure

## Policy Imperatives

- ❖ Holistic Approach
- ❖ Community Needs
- ❖ Plug into the SDG 2030
- ❖ Plug into National Development Plans







SUSTAINABLE DEVELOPMENT GOALS

**1** NO POVERTY

Icon representing a family of five people.

**2** ZERO HUNGER

Icon representing a bowl of food with steam rising from it.

**3** GOOD HEALTH AND WELL-BEING

Icon representing a heartbeat line and a heart.

**4** QUALITY EDUCATION

Icon representing an open book and a pencil.

**5** GENDER EQUALITY

Icon representing gender equality with a female symbol, an equals sign, and a male symbol.

**6** CLEAN WATER AND SANITATION

Icon representing clean water and sanitation with a water tap and a drop.

**7** AFFORDABLE AND CLEAN ENERGY

Icon representing affordable and clean energy with a sun and a power button symbol.

**8** DECENT WORK AND ECONOMIC GROWTH

Icon representing decent work and economic growth with a bar chart and an upward arrow.

**9** INDUSTRY, INNOVATION AND INFRASTRUCTURE

Icon representing industry, innovation and infrastructure with three stacked cubes.

**10** REDUCED INEQUALITIES

Icon representing reduced inequalities with a scale of justice.

**11** SUSTAINABLE CITIES AND COMMUNITIES

Icon representing sustainable cities and communities with buildings.

**12** RESPONSIBLE CONSUMPTION AND PRODUCTION

Icon representing responsible consumption and production with a circular arrow.

**13** CLIMATE ACTION

Icon representing climate action with a globe and an eye.

**14** LIFE BELOW WATER

Icon representing life below water with a fish and waves.

**15** LIFE ON LAND

Icon representing life on land with a tree and birds.

**16** PEACE, JUSTICE AND STRONG INSTITUTIONS

Icon representing peace, justice and strong institutions with a dove and a gavel.

**17** PARTNERSHIPS FOR THE GOALS

Icon representing partnerships for the goals with interlocking circles.

SUSTAINABLE DEVELOPMENT GOALS

The logo for the Sustainable Development Goals, featuring the text and a circular icon with 17 colored segments.

# Impact : Qualitative

- ❖ Behavioural changes of donors re Waqf donations
- ❖ Waqf cadres /ambassadors
- ❖ Ulama / Scholars
- ❖ Groundbreaking Research
- ❖ Social Justice: Equal access to Higher Education for the poor
- ❖ Positive Policy changes
- ❖ New knowledge produced
- ❖ Influencing Policy and Stakeholders

# Impact : Quantitative: Numbers

- ❖ No of people reached in terms of awareness
- ❖ No of donors acquired and quantity of donations
- ❖ Growth of donor base
- ❖ Growth in Waqf Funds, investments, assets
- ❖ New special schools, colleges, and Universities (free/fee)
- ❖ No of Under/ Masters/ PHD graduates
- ❖ Number & Quality of faculty members
- ❖ Alumni & Parent Contributions
- ❖ Measuring impact re SDG or in terms of KPI's



مؤسسة الأوقاف الوطنية بجنوب أفريقيا  
national awqaf foundation of south africa  
Inhlangano eyisisekelo kazwelonke i-Awqaf yaseNingizimu Afrika

[www.awqafsa.org.za](http://www.awqafsa.org.za)



*providing sustainable solutions...  
purely for the love of Allah*



REVIVING THE INSTITUTION  
OF **Waqf**

